



SMART
SOLUTIONS
FOR YOUR
SUCCESS

Product overview

Smart solutions for your industrial workflow



Since 2005, we have been working closely with our customers as a reliable consultant, manufacturer and service provider for all aspects of card, labelling, identification and robotics solutions. In combination with our industry-specific solutions, we create intelligent, holistic concepts and combine individual hardware and software components according to your requirements.

In addition to multifaceted labelling and identification using smart card and printer systems, our product range also includes electronic price signage, flexible digital signage applications and autonomous mobile robots.

Why us?

01 Broad product portfolio

Our diverse product portfolio enables us to offer complete solutions from a single source. As described in the following points, we also support you with individual services.

02 Consulting

Our experts are on hand to provide you with comprehensive advice. We believe in working together as partners to develop the best solutions for your requirements.

03 Accompanying installation

Our services do not end with the sale. We also support you during installation and commissioning. This ensures a successful start to using our systems.

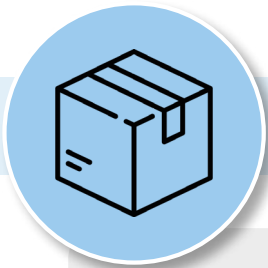
04 Maintenance and support

We understand that your systems require attention. That is why we offer comprehensive maintenance and support services to ensure that your investment continues to function in the long term.



Our full-service offerings

1. Project management
2. Installation and commissioning
3. Technical support



1. GOODS RECEIPT

Handhelds and workstations improve efficiency by automating tasks and providing real-time information.

- Precision plays a key role in goods receipt
- Recording and checking delivered goods



ZEBRA WORKSTATIONS

- Powerful all-in-one solution
- Support for all industrial processes

Functionality

- Deployment of Zebra mobile devices
- Temporary expansion of devices to fully-fledged PC workstations or POS stations
- Similar functions to a laptop, but with lower energy costs

..... ZEBRA MOBILE HANDHELDS OF THE TC SERIES



- Powerful and robust
- Tools for improving efficiency
- Various models depending on the application:
 - TC2X series as a cost-effective entry-level option
 - TC5X series for robustness and performance
 - TC7X series for extremely demanding applications

Application in goods receipt

- Barcode scanning, optional RFID
- Recording data such as item numbers, quantities, and weight specifications
- Taking pictures for quality control and documentation

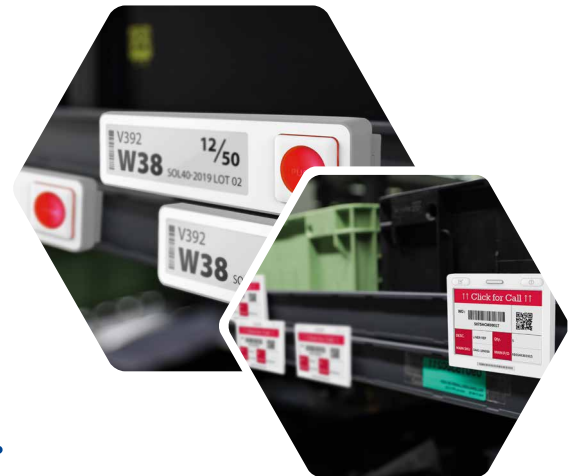




2. STORAGE

Electronic labels and scanners ensure optimal use of space for various storage models. They contribute to the optimisation of storage processes.

- The warehouse as the foundation of operational efficiency
- Real-time storage location and inventory data for process optimisation and optional material-management



ELECTRONIC LABELS

- An important component of modern warehousing
- Reduction of errors and savings in time and material resources in the warehouse
- Combination with software solutions for increased efficiency, and digitalisation
- Pixel-precise display for optimal and permanent legibility of information and codes

Use in warehouses

- Management of warehouse processes
- Display of real-time data and reordering at the shelf
- Display of safety instructions and regulations
- Checking stock levels



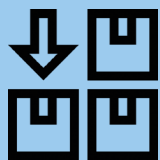
..... SEPIOO LABELS BY PDI DIGITAL

- Labels in seven different sizes
- Up to four programmable buttons
- Can be combined with location technology
- Accelerometer & temperature sensor

Advantages of sepioo labels

- Real-time information transmission
- Help with inventory management & goods tracking
- IP67 for demanding operating environments
- Optimal compatibility with the sepioo IIOT platform
- Very low power consumption





3. ORDER PICKING

Wearables and Android tablets are particularly helpful in order picking, enabling the precise recording of product data and locations.

- Smooth order picking process as key to customer satisfaction
- Acceleration of the picking process



VERSATILE AND ROBUST ZEBRA TABLETS

- Support for Android and Windows
- Individual configuration possible
- Supplement with peripheral devices such as a keyboard or scanner
- Series: ET4x series, ET5x series, ET6x series, ET8x series

Advantages in order picking

- Displaying picking lists
- Data collection for stock items
- Can be connected to warehouse vehicles such as forklifts
- Particularly robust thanks to IP66 sealing on the housing
- Error reduction through digitisation of paper-based processes



AUTONOMOUS MOBILE ROBOTS

- Intelligent solution for cooperation between human and machine
- Reduction of time and workload
- Increased order accuracy
- Takeover of repetitive processes and transportation tasks

Use in order picking

- Navigation through the aisles
- Localisation of the required items
- Transportation to designated packing stations

ZEBRA WEARABLES

- Wearable scanner with Bluetooth function
- Lightweight, powerful and versatile
- Combination and communication with other devices possible
- Scanning codes, e.g. on picking lists or products

Benefits for employees

- No restrictions in everyday working life
- Lightweight in the hand
- Scanning possible for left- and right-handed users
- Different carrying methods





4. MANUFACTURING

Industrial image processing and digital software solutions are regarded as a comprehensive solution for increasing productivity within a company.

- Automation, quality control and traceability of materials in the production process
- Minimisation of potential returns



EKKO

- Complete digital solution for optimising industrial processes
- Software solution for electronic labels

Our solutions

- **Pick-by-Light:** Display of flashing LEDs on electronic labels
- **Shelf labelling:** Display of all information directly at the shelf
- **Digital consignment note:** Label on the transport rack
- **E-Kanban:** Reorder at the touch of a button directly on the label
- **Warehouse management:** mapping internal material and information flows

INDUSTRIAL IMAGE PROCESSING AND STATIONARY BARCODE READERS

- **Quality control:** Automated inspection of colours and sizes, detection of defects
- **Tracking items:** From manufacturing to distribution
- **Zebra Aurora Software:** Software platform for easy device setup and management



Automatic barcode readers

- Various models depending on the application
- Differences in reading range, speed, accuracy
- Ideal for industrial environments

Smart cameras and sensors

- Expansion of the scanning function
- Executing image processing applications
- Provision of real-time information





5. SHIPPING

The use of scanners and label printers is essential in the shipping process. Their functions significantly speed up the process.

- Exact comparison of shipped products with order and delivery bill possible
- Minimisation of potential returns



ZEBRA MOBILE COMPUTERS.....

- Designed for all-day use
- Practical combination of touchscreen and keypad
- Fast Bluetooth pairing with ring scanners, printers or headsets possible

Barcode scanning taken to the next level

- Scanning possible from a long distance
- Simultaneous capture of multiple barcodes and RFID



..... ROBUST SCANNERS FROM THE ZEBRA DS3600 SERIES

- 2D barcode scanners in various designs
- Can be used indoors and outdoors
- Data collection for inventory management
- Improving efficiency in the warehouse

Advantages of scanners

- High reading speed and accuracy of codes
- Drop, dust and shock resistant
- Long battery life up to 24 hours
- Very high reading ranges up to 21 m

INDUSTRIAL LABEL PRINTERS

- Different models for different requirements
- Suitable for use in harsh industrial environments
- Numerous connectivity options

Advantages in shipping

- Label printing for letters, parcels and internal labelling
- Handling particularly high pressure volumes
- High printing speed and resolution



Our AMR solutions



The efficient, autonomous and mobile solution – **autonomous mobile robots (AMRs)** are revolutionising industry. With sensors and intelligent navigation, they optimise material transport, manufacturing, quality control and the cleaning of industrial areas. This technology increases efficiency and safety, and process flows can be automated, digitised and presented in a more measurable way for easier optimisation. The use of AMR solutions is the future of industrial automation.

AMR PRODUCT RANGE

- **Zebra Robotics Automation:**
Versatile warehouse specialists
- **Mobile Industrial Robots (MiR):**
Powerful load transporters
- **Innok Robotics:**
AMR for indoor and outdoor use
- **PUDU:** Cleaning and delivery robots



For further information on AMR please feel free to visit us at our website www.log-robot.com.



Our partners



S&K Solutions GmbH

📍 Sailerwöhr 16
94032 Passau, Germany
☎ +49 851 200930-30
✉ info@sk-solutions.com
🌐 www.sk-solutions.com

All About Cards | www.allaboutcards.de/en

auto-id 24/7 | www.auto-id247.com

e-shelf-labels | www.e-shelf-labels.com

log-robot | www.log-robot.com



brands of solutions